

# CITY OF MORETON BAY

## WELCOME TO SusHi TECH TOKYO

Annie Lawrence

Head of Industry Advancement - City of Moreton Bay

April 2026, SusHi Tech Tokyo



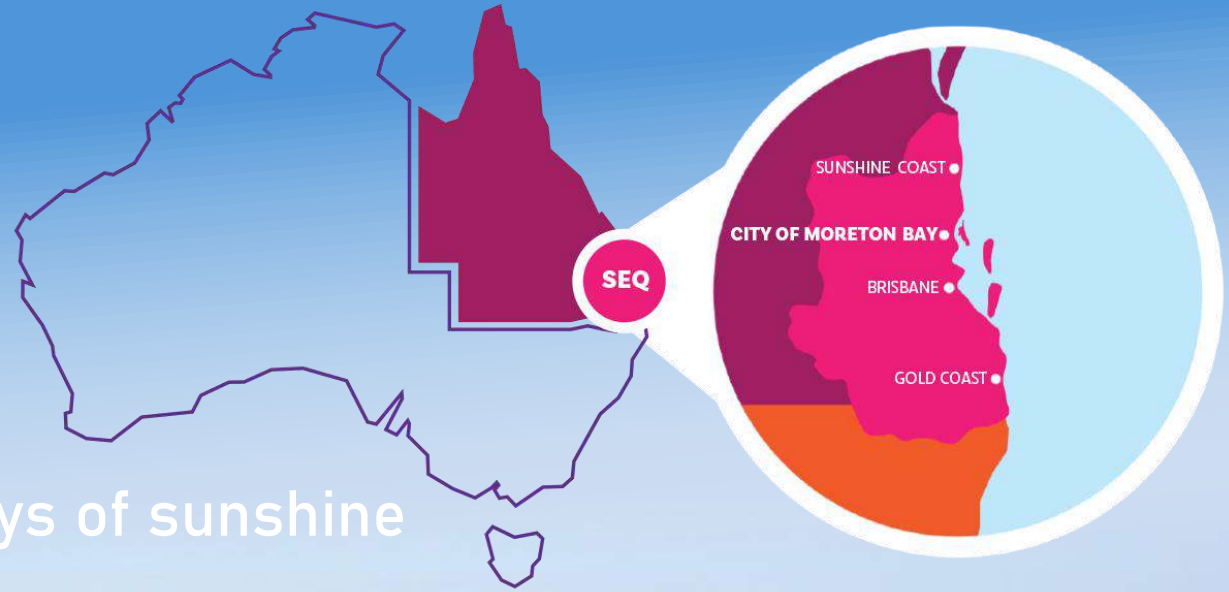
 Brendale



# CITY OF MORETON BAY

SOUTHEAST QUEENSLAND, AUSTRALIA

- Adjacent to Brisbane, Queensland
- 530,000 residents & growing rapidly
- 296km of coastline, 16 beaches, 300 days of sunshine



3rd Largest Local  
Government Area

Direct Access  
to Global Markets

\$25 Billion Economy

2032 Olympic Games





# PREPARING FOR THE FUTURE

Queensland is Australia's most disaster-prone state

## Climate change impacts

- More intense bushfires, floods, cyclones, storms, heatwaves
- Rising sea levels, heavier downpours, harsher fire weather

## Strong partnerships driving innovation



test & trial facilities



risk management & resilient infrastructure



CHALLENGE THE MEA

# DISASTER

## PREDICTION TO PREPAREDNESS

Key focus areas:

Early warning  
& forecasting

Community messaging  
& understanding

Turning warnings  
into action

Enhancing systems  
(Moreton Alert, Disaster  
Dashboard)



CHALLENGE THE MEA

# DISASTER RESPONSE

## WATER DELUGE IN A GROWING CITY

Key focus areas:

- Intense rainfall & overland flow
- Urban infill & changing water movement
- Stormwater asset capacity

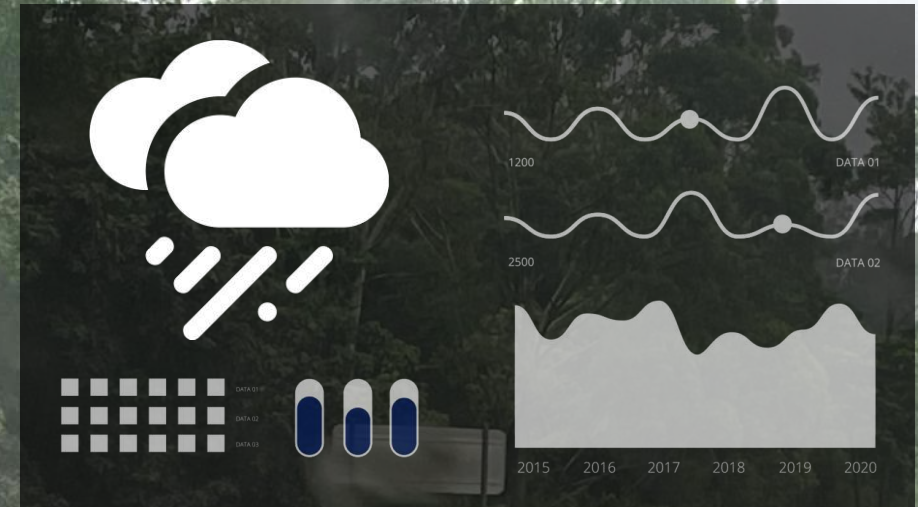
Opportunities:

Sensors

AI

Robotics

Cost-effective  
resilience  
upgrades



CHALLENGE THEM EMB

# SPECIFIC INFRASTRUCTURE

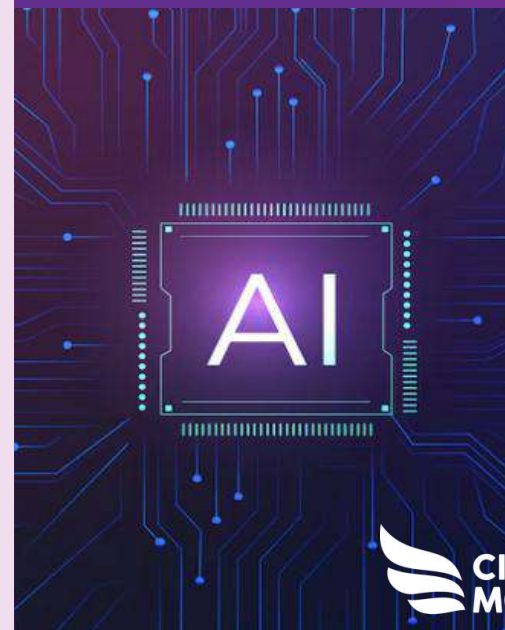
Green  
renewables, active  
transport

Inspection of stormwater  
pipes, & roads using  
robotics & sensors

Security with  
AI cameras

Analysis of  
urban data

AR/VR training  
systems



# THE SCALE OF ASSETS & CHALLENGES

**700,000**  
ASSETS

**+2.7%**  
PER YEAR

**\$9.8B**  
REPLACEMENT  
VALUE

Key statistics:

**3,806km**

ROADS

**2,709km**

STORMWATER  
PIPES

**384**

BRIDGES

**1,972**

CCTV

One of QLD'S  
Largest networks



Coastal hazards costing  
\$42M per year on average



# OUR CITY BRAIN

## FUTURE OPERATIONS PLATFORM

- Data & operations platform
- Enables AI for staff & community
- Benefits: maintenance prioritisation, emergency management (Flood 2.0) compliance
- First capabilities launching November 2026
- Supports 2032 Olympics & SEQ regional alignment



# A GROWING ECONOMY WITH A GLOBAL OPPORTUNITY



 **BIGGER.**  
\$40B economy

 **BOLDER.**  
100K new jobs and  
16K new businesses

 **BRIGHTER.**  
Top 10 Knowledge and  
Innovation Hub

- Located in the heart of SEQ
- Population: 522,494 | 800,000 by 2046 & 1M by 2060
- 33,587 businesses | 168,158 jobs
- \$25B Gross Regional Product
- \$830M+ in economic output past 12 months
- 6,500 new jobs in the past year
- Priority Industries –
  - Food & Agribusiness
  - Advanced Manufacturing
  - Tourism, Sport & Major Events
  - Knowledge & Innovation
- 2032 Olympic Games host venue

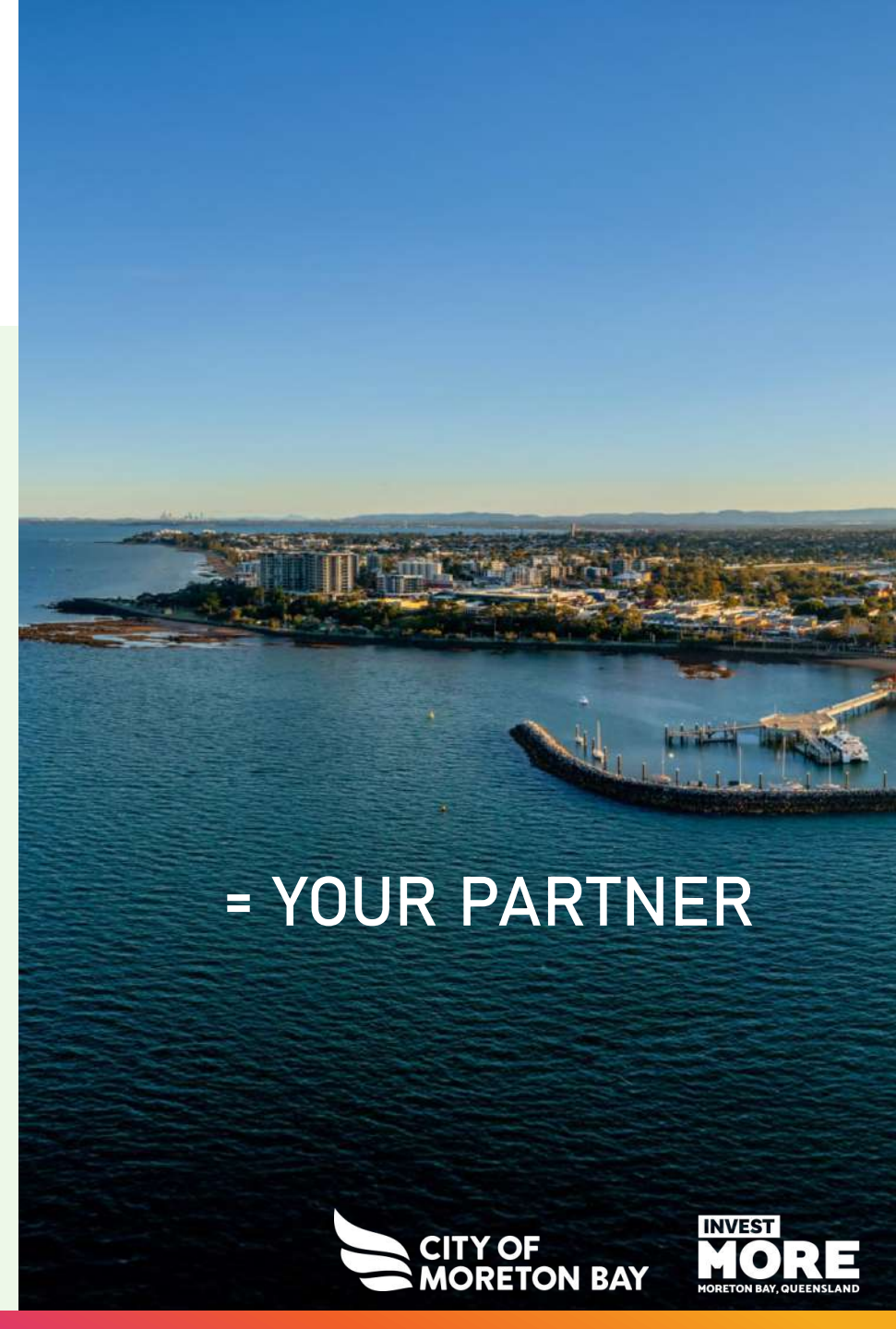
# A GROWING CITY

## A Platform for Growth

- One of Australia's fastest growing regions
- A strategic gateway to the Australian Market

## Supporting Global Partners to Grow

- Market entry with government & industry support
- Build local partnerships & customer pathways
- Test and scale solutions in real-world
- Partnerships with Trade & Investment Queensland
- Innovation-ready infrastructure & digital capability



= YOUR PARTNER

# INNOVATION PARTNERSHIPS



## UniSC

- Qld's newest university, located in a high-growth corridor
- Direct connectivity via public transport, linking industry, students & partners
- Specialist engineering & advanced technology laboratories

## UniSC Collider

- Innovation accelerator supporting startups & industry
- Infrastructure for testing, prototyping & real-world trials
- Focus sectors include ag-tech, health & robotics
- Access to high-tech equipment & expertise

# We warmly welcome your applications!

NEXT: PANEL CONVERSATION

PANELLISTS: MR JAMES GALDI (CADENT) & MS MELISSA INOOKA (TRADE & INVESTMENT QUEENSLAND)



**Annie Lawrence**

Head of Industry Advancement,  
Economic Development  
City of Moreton Bay

[anne.lawrence@moretonbay.qld.gov.au](mailto:anne.lawrence@moretonbay.qld.gov.au)  
[investmoretonbay.com.au](http://investmoretonbay.com.au)  
[moretonbay.qld.gov.au](http://moretonbay.qld.gov.au)



Our Partners



#TeamMoretonBay - collaborative  
and supportive