



MAILMÖ



186

nationalities

30 MIN

by commuter train to Copenhagen

365 000

residents

48 PERCENT

under the age of 35

22 M

inhabitants in Scandinavia

4.2 M

inhabitants in the Öresund region

15 MIN

to CPH airport with direct flights to Haneda

BRIDGEHEAD

between Scandinavia and Northern Europe



A photograph of a man with dark skin and dreadlocks, smiling broadly. He is wearing a light blue t-shirt and a red beaded necklace. He is holding a glass of beer. In the background, there are other people, including a woman with blonde hair and another with dark hair, all appearing to be at a social event or festival. The image has a slightly blurred, warm-toned aesthetic.

Close to
40 000 businesses

Long history of
brave decisions
in the city

The business sector
grows faster
than in other large cities

Large proportion of
international
talent

Urban challenges in **MALMÖ**



Food – One of the Great Challenges of Our Time

Many of the challenges to achieving sustainable development are found within the food system. The reasons why we are now exceeding 6 out of 9 planetary boundaries lie in the energy system and **the food system**



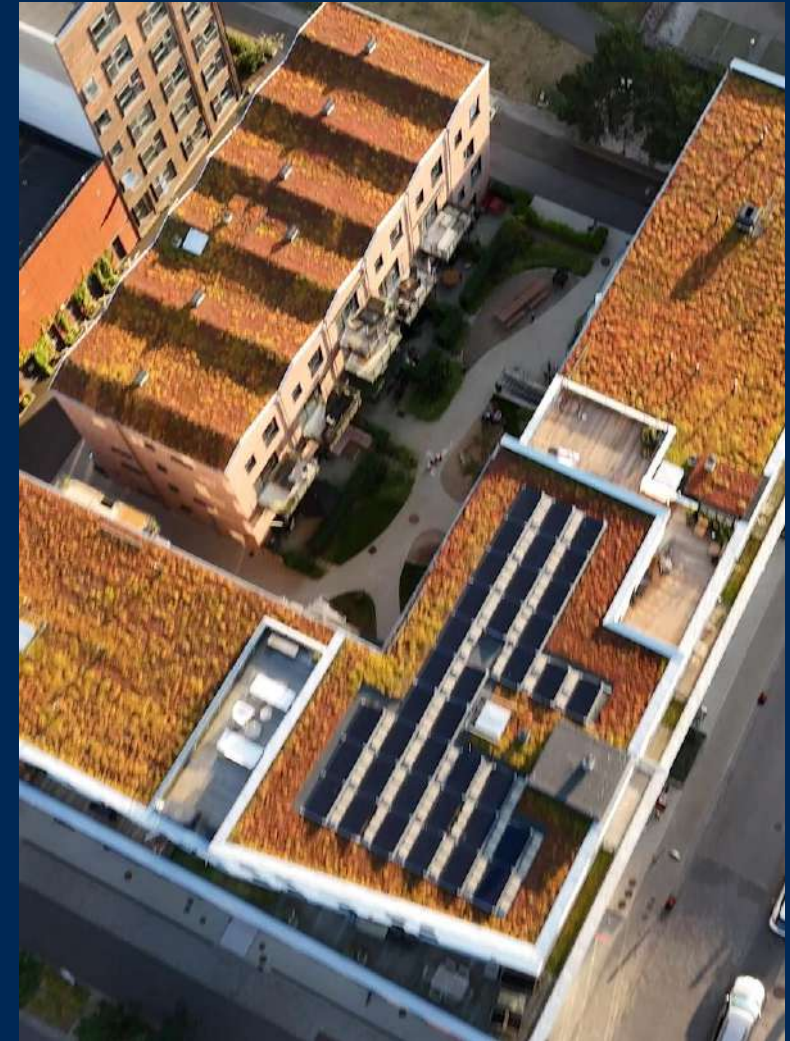
Food – One of the Great Challenges of Our Time

- Cities are currently **separated** from the rest of the food system
- The city has enormous amounts of **unused resources**
- We want the city to become an **active part** of the food system



Sustainable Urban Development

As one of 100 cities chosen by the EU to become climate-neutral by 2030, Malmö is dedicated in its work toward increased circularity and sustainable solutions. Sustainable urban development is essential both for tackling climate change, and for creating an inclusive city for everyone seeking life comfort, recreation and work life balance.



IN MALMÖ WE DO GREAT THINGS TOGETHER

For PoC within the urban food system and sustainable city development



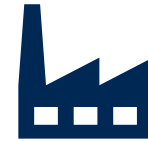
Academia

Malmö University
Lund University
Agricultural University



City Departments

Environment
Sustainability
City Planning



Publicly owned enterprises

Water supply
Waste management
Real estate



The innovation ecosystem in **MALMÖ**

by Jonas Michanek

A TRUE INNOVATION CHAMPION

2nd

Sweden is the second most innovative country in the world (Global Innovation Index 2024).

3.5%

At 3.5% of GDP R&D investment is highest in EU (EU average 2.2%).

€4.7B

Sweden raised €4.7B in VC investment in 2023, ranking 4th in Europe.

€3.5B

Sweden raised €3.5B in impact VC investment in 2023, ranking 2nd in Europe.

€239B

Ecosystem valuation, growing x2 since 2019

41

Sweden has 41 unicorns, ranking 9th globally.



MALMÖ'S STARTUP SCENE

The strength of the Öresund region

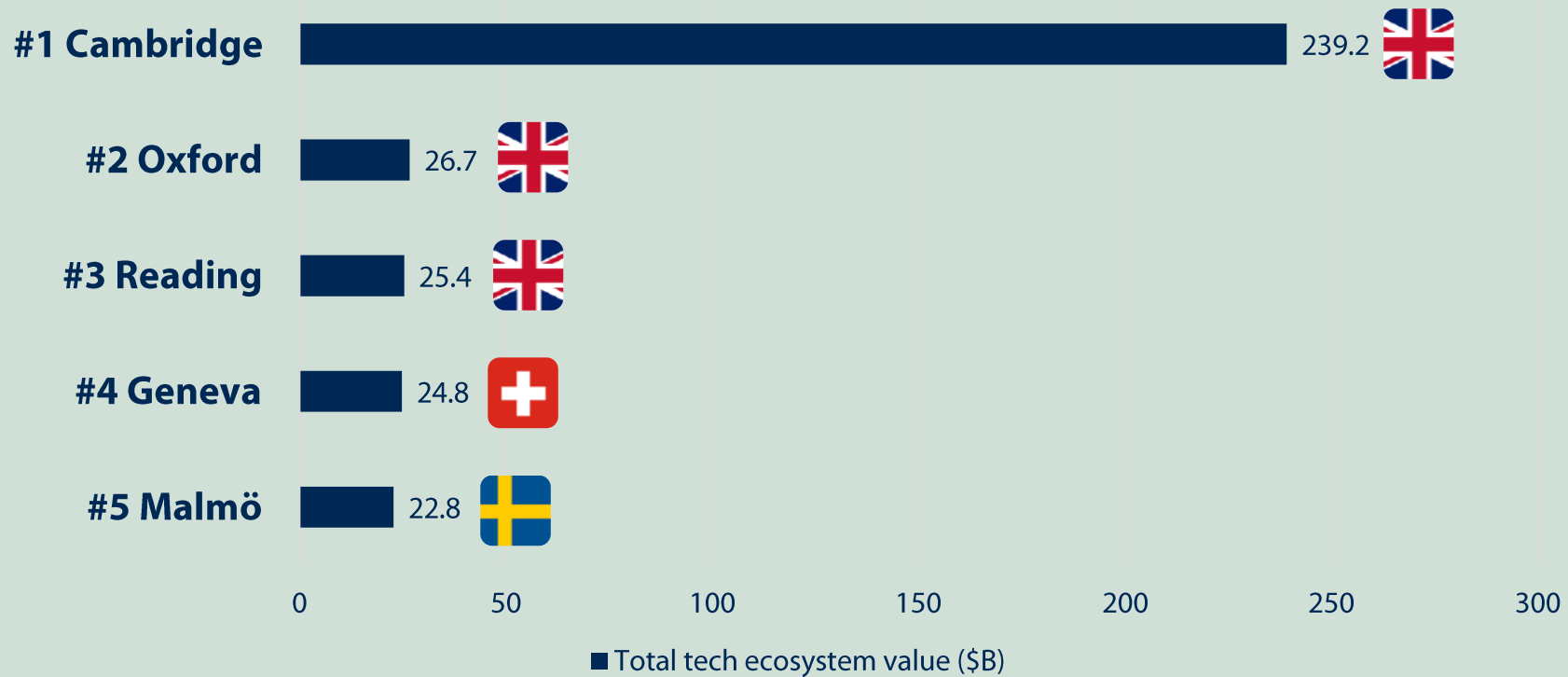
Malmö is part of the **Öresund region**

- The largest metropolitan area in the Nordic region
- 4.2 mil. inhabitants
- Access to an international network, expertise and capital
- International mindset with English-speaking teams & global ambitions
- Focus on impact, tech (fintech, healthtech, edtech), and creative industries
- Strong support from accelerators, angels & Almi Invest



MOST VALUABLE TECH ECOSYSTEMS

in Europe with under 500k population



THIS IS MINC

The Startup house of Malmö



€135M

Yearly turnover



1 020

Jobs



80%

Still active



2

Companies
sold to Apple



800

Yearly
applications



2025

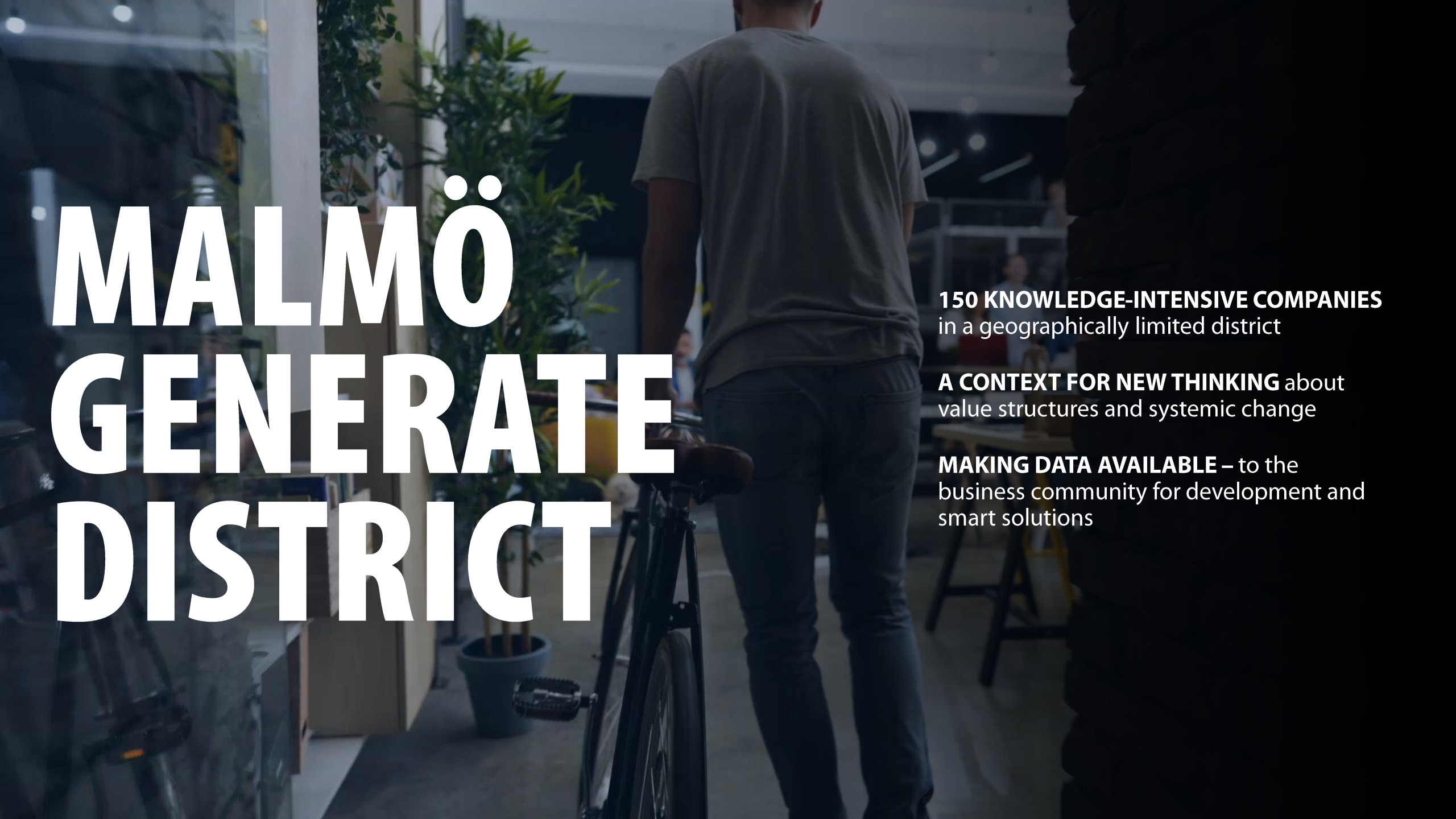
Europe's
Leading Startup
hubs



300

Startups





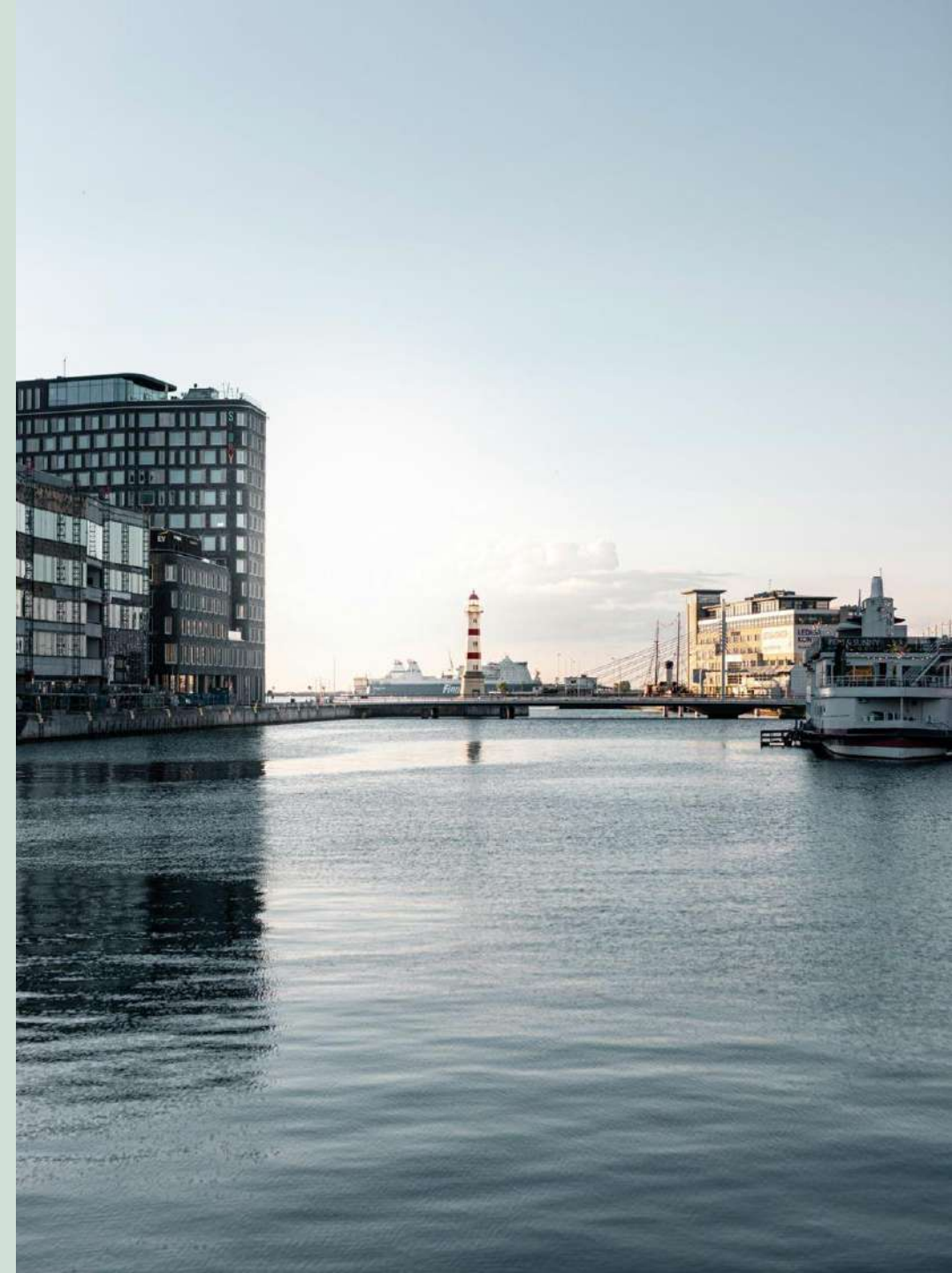
MALMÖ GENERATE DISTRICT

150 KNOWLEDGE-INTENSIVE COMPANIES
in a geographically limited district

A CONTEXT FOR NEW THINKING about
value structures and systemic change

MAKING DATA AVAILABLE – to the
business community for development and
smart solutions

Malmö's startup scene thrives at the intersection of strong talent and research, with particular strengths in food tech, sustainability, SaaS, life science, and game development.



ACADEMIA

More universities than any other region in Europe

 **150 000**

Students

 **14**

Universities and colleges

 **10 000**

Scientists



THE LOCAL SUPPORT SYSTEM

minc.

 Pale blue dot

**INNOVATION
SKÅNE**

KRINOVA
INCUBATOR & SCIENCE PARK

**Game
Habitat**

almi

 **MEDEON**

**FOODTECH
INNOVATION
NETWORK**

smile 

**invest
in skåne**

**MEDIA
EVOLUTION**

 **Biotech
Heights**

Level
MALMÖ

**Skåne
Ventures**

 **Sustainable
Business Hub**

**MALMÖ
FOOD
COUNCIL**

SUCCESS STORIES

The logo for neo4j, featuring a stylized 'n' with a small graph icon and the text 'neo4j'.The logo for Mapillary, featuring a stylized 'M' with a small camera icon and the text 'Mapillary'.The logo for Polar Rose, featuring the text 'Polar Rose' and a small flower icon.The logo for APSIS, featuring the text 'APSYS' and 'an efficy product' with a small icon.

OUR STARTUPS

The logo for Re=Meat, featuring the text 'Re=Meat'.The logo for ANGRY CAMEL, featuring a cartoon camel face and the text 'ANGRY CAMEL'.The logo for dLab, featuring the text 'dLab'.The logo for imvi, featuring the text 'imvi' and 'improving vision'.

DEDICATED SUPPORT

From Japan Business and Innovation Hub



Introduction to the region's **business community**



Networking event and occasions



Matchmaking with the best suitable partner for your **PoC**



Coordination with **establishment and expansion experts**



Customized **study tours** based on request



Admission for **Impact week** and **Nordic Fe:male Invest** summit



Free **office space**

